

BLUEBIRD

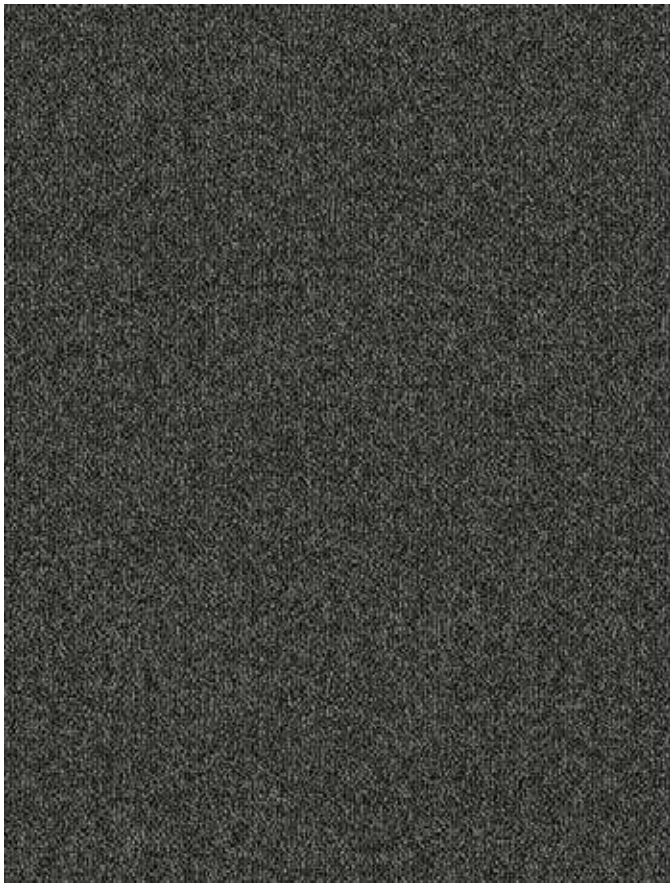


Bluebird - 654, 655

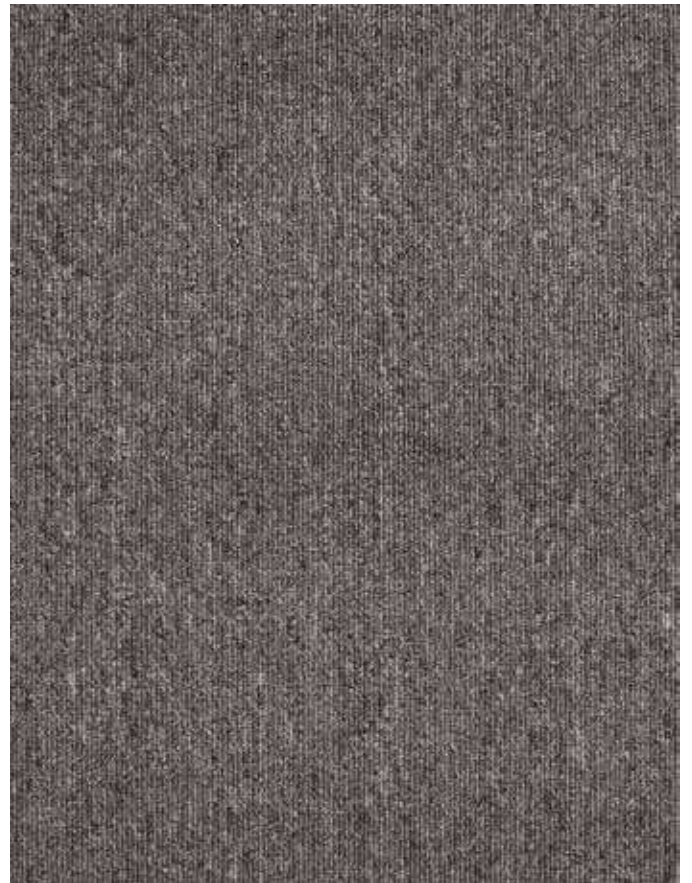
Plain Loop Carpet Tiles
50 x 50 cm



Web: fixitdesign.ae
Phone: [+971554722980](tel:+971554722980)
Email: info@fixitdesign.ae



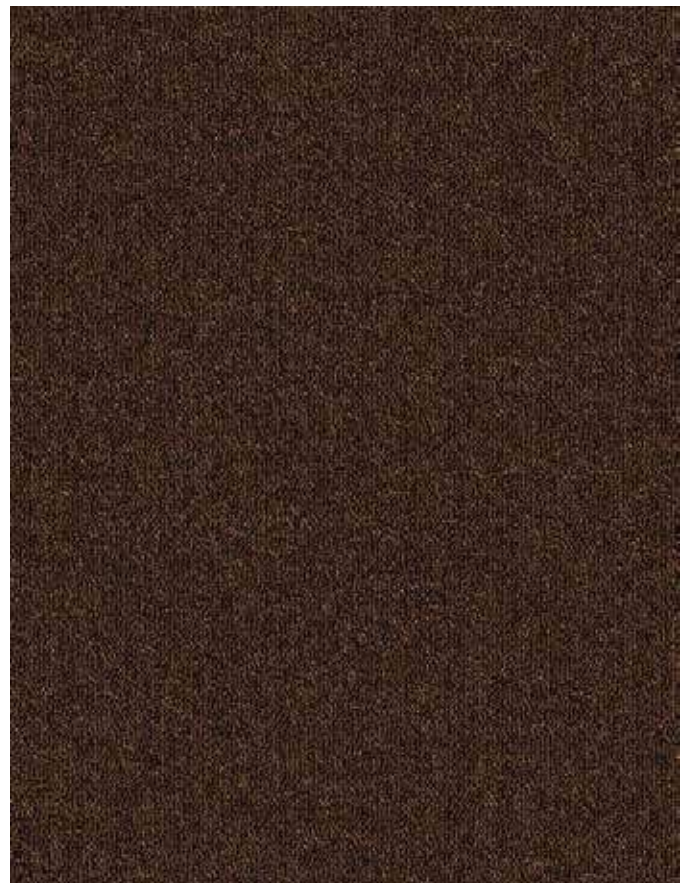
Bluebird 678 - Charcoal



Bluebird 677 - Grey



Bluebird 649 - Chocolate



Bluebird 648 - Coffee Brown



Bluebird - 678, 625, 643





Bluebird - 677







Bluebird 643 - Dark Beige



Bluebird 641 - Granite



Bluebird 640 - Camel



Bluebird 663 - Olive Green



Bluebird - 643



Bluebird - 641



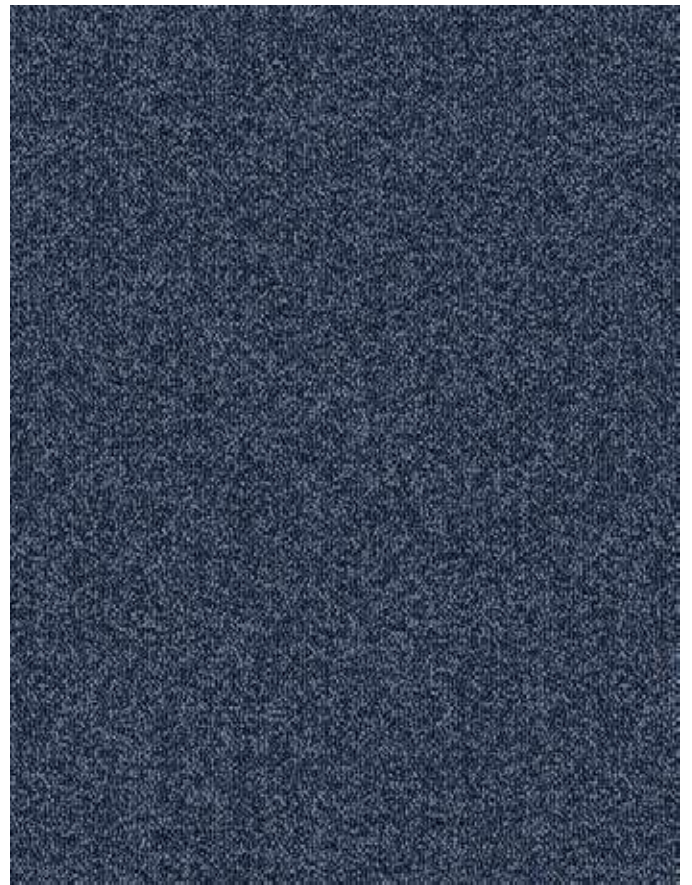
Bluebird - 640



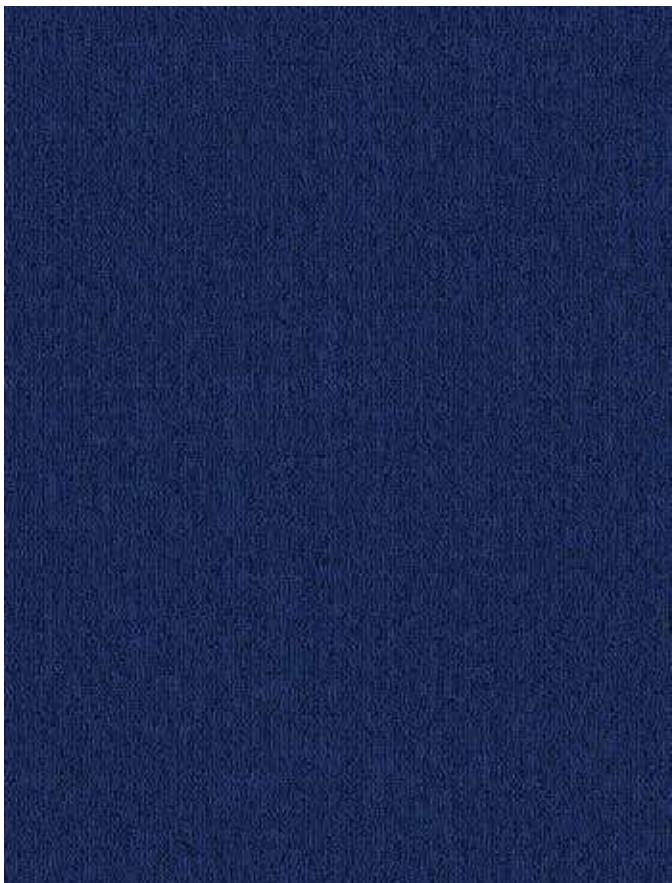
Bluebird - 663



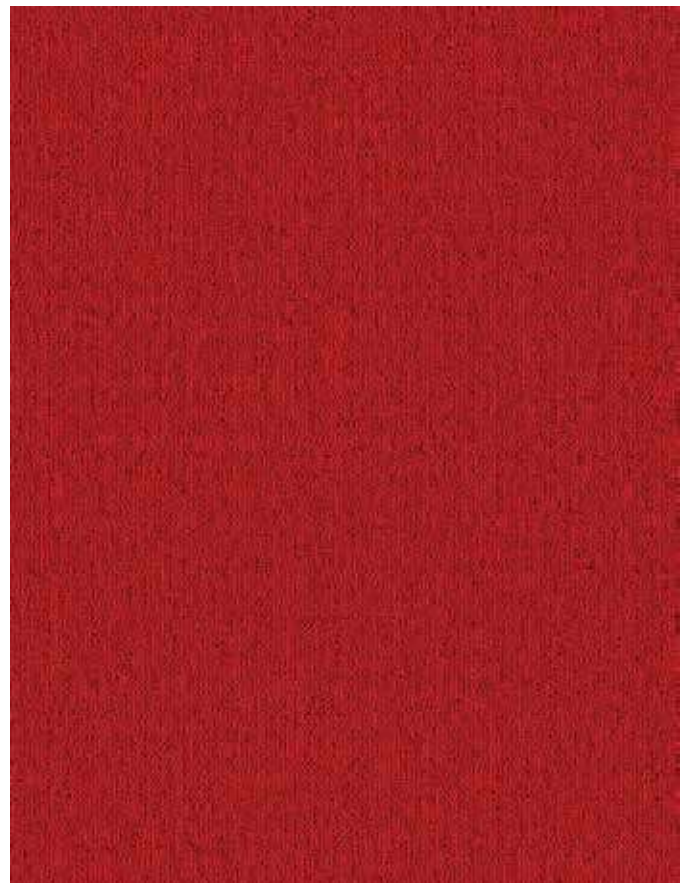
Bluebird 656 - Dark Blue



Bluebird 655 - Denim Blue

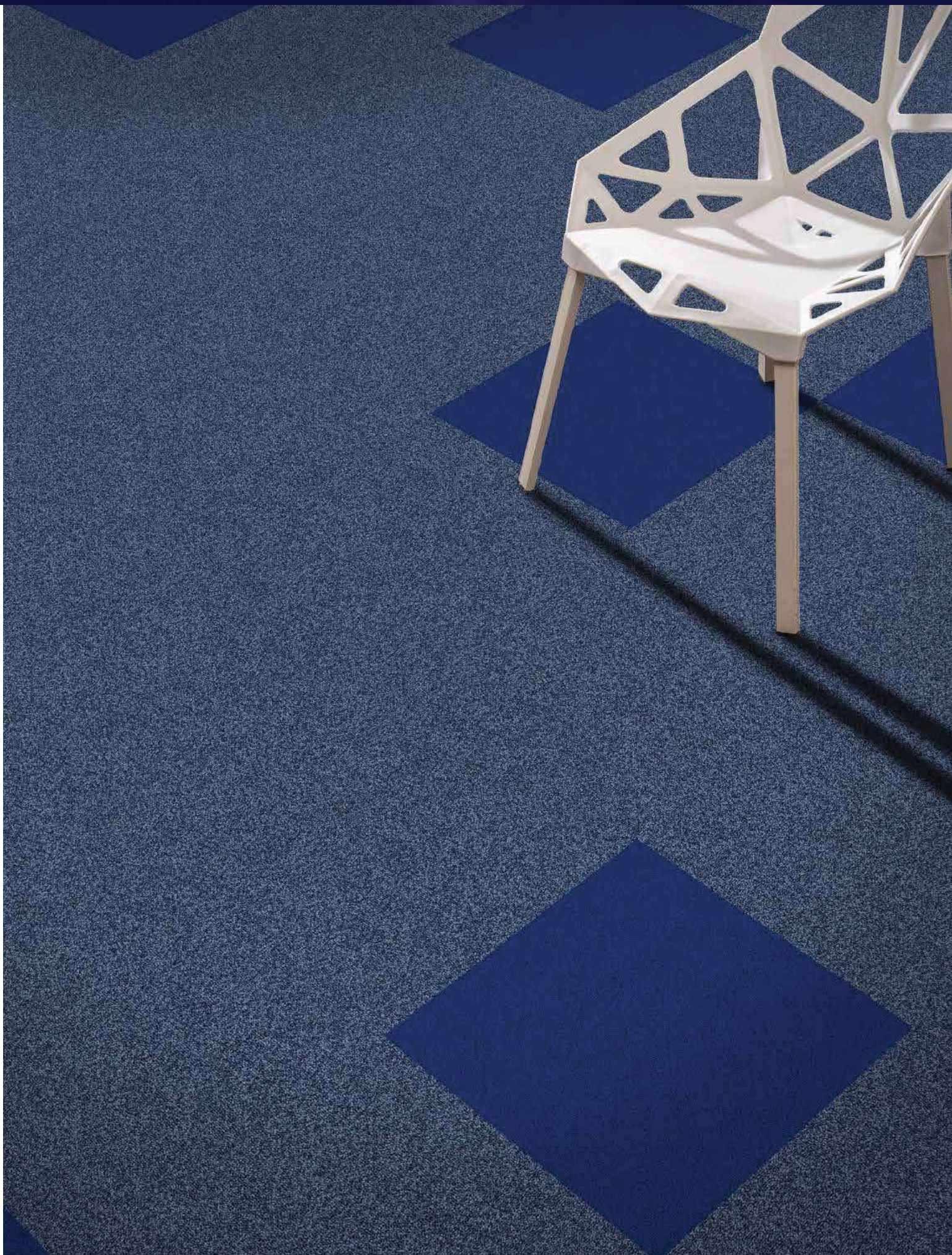


Bluebird 654 - Blue



Bluebird 625 - Red

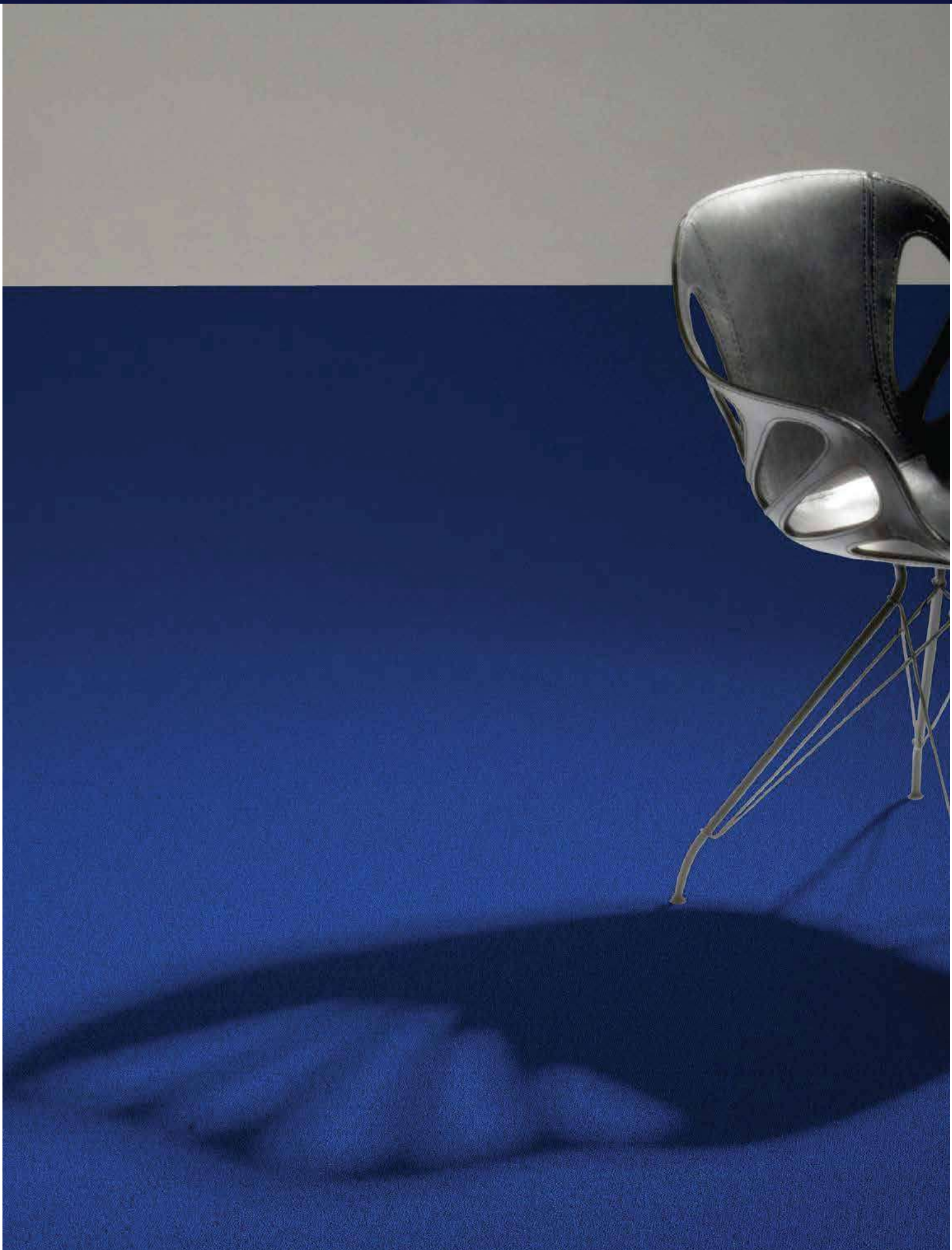




Bluebird - 654, 655



Bluebird - 655



Bluebird - 654



Bluebird - 625

BLUEBIRD



Product Specification:

Style	:	Bluebird
Construction	:	Loop Pile
Pile Fiber Composition	:	100% Olefin PP
Yarn Type	:	BCF
Dye Method	:	Solution Dyed
Gauge	:	1/10"
Pile Height	:	3.5 mm \pm 0.25mm
Pile Weight	:	580g/m ²
Total Weight	:	4000g/m ²
Primary Backing	:	PES/PA Fleece (Non woven Textile)
Secondary Backing	:	PVC reinforced by Glass Fiber
Total Thickness	:	5.6 \pm 0.5mm
Number of Tufts	:	158000/m ² (Approx)
Tile Size	:	50cm x 50cm
Area of use	:	Commercial
Packing	:	20pcs/carton (5m ²)

Performance Specification:

Flammability	:	ASTM D-2859/FFI-70/16CFR 1630 Pass 8/8
Smoke Density	:	ASTM E662 Less than 450
Static Propensity	:	AATCC - 134 under 3.5 KV
Colour Fastness	:	5:5 on Gray Scale
Soiling Propensity	:	AATCC123 Gray Scale 5
Dimensional Stability	:	DXN 54318 6.20



Sound

Insulation



Heat

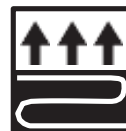
Insulation



Anti-static



Colorfast



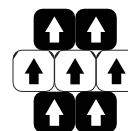
Suitable for

underfloor heating

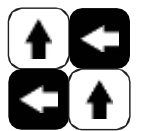


Anti-

flammability



Brick



Quarter

Turn

Terms and Conditions: Specifications are subject to manufacturing tolerances and maybe changed without prior notice. Dye lots may vary in colour from sample and between production lots. All product purchases are subject to Messara Trading Standard Terms and Conditions of Sale. Please refer to our Installation Guideline, Maintenance Manual and Warranty Document for further clarification.

Disclaimer: This Brochure is presented for informational purposes only. Every effort is made to ensure that carpet images are of an accurate representation of the product. However, they are for illustrative purposes only and colour variations may occur in actual product, and between die series. Please note that lineal patterns when installed directional, may produce an undesired effect when lines of the same colour meet of two edges. Installers need to monitor this during installations and reposition tiles where appropriate. Patterns that are random in nature may contain additional colour ways to the ones displayed on the samples. Please consult your commercial sales consultant for further informations.